



ALIS

PRO

MASTER CATALOGUE

DISPOSABLES

SAFETY. HYGIENE. PROTECTION.
EVERYTIME.



PREMIUM
QUALITY



SAFE &
HYGIENIC



LIGHTWEIGHT &
COMFORTABLE



WIDE RANGE
OF DISPOSABLES

About Us



Royal International | Alis Pro

Royal International is a reputed **Manufacturer and Exporter** of premium-quality **Surgical Instruments** and **Complete Hospital Setup Solutions**, based in **Jalandhar, Punjab**, India—one of the world’s recognized hubs for surgical instrument manufacturing.

Under our brand **ALIS PRO**, we design, manufacture, and supply a wide range of reliable, durable, and precision-engineered medical products that meet the evolving needs of the global healthcare industry. Quality, safety, and performance are the core principles that guide everything we do.

In addition to surgical instruments, **Royal International** offers **end-to-end hospital setup solutions under one roof**, including:

- Surgical Instruments
- Hospital Furniture
- ICU & OT Equipment
- Anesthesia and Critical Care Equipment
- Medical Devices and Accessories
- SCIENTIFIC & LABORATORY EQUIPMENTS
- Disposable ITEMS

Our manufacturing processes follow strict quality control systems and international standards, supported by advanced technology and skilled professionals. Every product is carefully inspected to ensure consistent quality, functionality, and long service life.

We believe in building long-term relationships with our clients by delivering **on-time service, dependable quality, competitive pricing, and responsive customer support**. Whether it is a clinic, nursing home, or a large multi-specialty hospital, we approach every project with the same level of commitment and professionalism.

Today, **Royal International** and **ALIS PRO** stand for **trust, innovation, and excellence in healthcare solutions**, serving customers across domestic and international markets. Our mission is to support global healthcare systems with reliable products and to contribute to better patient care worldwide.

Product Guide

S.NO	MODEL	BRAND	ITEM NAME	Page No.
Disposable ITEMS				
1	AL-DRC	ALIS PRO	Dr. Coat	5
2	AL-USS	ALIS PRO	UNISEX SCRUB SUIT	6
3	AL-LA	ALIS PRO	LEAD APRON	7
4	AL-DLC	ALIS PRO	DOCTOR LAB COAT	8
5	AL-PG	ALIS PRO	PATIENT GOWN	9
6	AL-DC	ALIS PRO	DISPOSABLE CAP	10
7	AL-FM	ALIS PRO	FACE MASK	11
8	AL-DG	ALIS PRO	DISPOSABLE GLOVES	12
9	AL-DSC	ALIS PRO	DISPOSABLE SHOE COVER	13
10	AL-DCA	ALIS PRO	DISPOSABLE COVER ALL	14
11	AL-PIB	ALIS PRO	PATIENT IDENTIFICATION BAND	15
12	AL-TCFSKC	ALIS PRO	TIE CLOSURE FULL SLEEVE WITH KNIT CUFFS	16

ALIS PRO

DR. COAT

DR. COAT



01

Key Features

- Premium Quality Fabric for Comfortable All-Day Wear
 - Half Sleeve Professional Medical Coat Design
 - Front Button Closure for Easy Wearing
 - Multiple Utility Pockets for Carrying Essentials
 - Breathable and Lightweight Construction
 - Wrinkle Resistant and Easy Maintenance
 - Suitable for Doctors, Nurses, Lab Staff & Medical Professionals
 - Neat Stitching with Professional Finish
 - Comfort Fit with Smart Collar Design
- Durable Fabric for Long-Term Usage

Technical Specifications

- Product Type Doctor Coat
- Material Poly Cotton / Cotton Blend Fabric
- Sleeve Type Half Sleeve
- Closure Type Front Button Closure
- Color White
- Collar Type Notch Collar
- Pocket Configuration Chest Pocket and Front Lower Pockets
- Fit Type Regular Fit
- Usage Hospital, Clinic, Laboratory & Medical Institutions
- Wash Care Machine Washable

Dimensions (Approx.)

- Available Sizes Small Medium Large XL XXL
- Approximate Length 28 to 34 Inches Depending on Size
- Chest Size Range 36 to 46 Inches
- Sleeve Length Approx. 10 to 12 Inches

Weight (Approx.)

- Approximate Weight 300 to 500 Grams Depending on Size and Fabric Quality

Model number
AL-DRC

ALIS PRO UNISEX SCRUB SUIT



UNISEX SCRUB SUIT

02

Key Features

- Soft and Breathable Fabric for All-Day Comfort
- Unisex Design Suitable for Medical Professionals
- V-Neck Scrub Top with Modern Fit
- Elastic Waist Trouser for Comfortable Wearing
- Lightweight and Skin Friendly Material
- Durable Stitching for Long-Term Usage
- Easy to Wash and Quick Dry Fabric
- Fade Resistant and Wrinkle Resistant Material
- Suitable for Hospitals, Clinics, Labs & OT Use
- Professional and Comfortable Medical Wear

Technical Specifications

- Product Type Unisex Scrub Suit
- Material Poly Cotton / Cotton Blend Fabric
- Color Surgical Green
- Top Style V-Neck Half Sleeve
- Bottom Style Straight Fit Trouser
- Waist Type Elastic Waistband
- Fit Type Regular Fit
- Gender Unisex
- Usage Hospital, Clinic, Laboratory & Operation Theatre
- Wash Care Machine Washable

Dimensions (Approx.)

- Available Sizes Small Medium Large XL XXL
- Top Length Approx. 26 to 30 Inches
- Trouser Length Approx. 38 to 42 Inches
- Chest Size Range 34 to 46 Inches
- Waist Size Range 28 to 40 Inches

Weight (Approx.)

- Approximate Weight 450 to 700 Grams Depending on Size and Fabric Quality

Model number
AL-USS

ALIS PRO LEAD APRON

LEAD APRON



03

Key Features

- High Radiation Protection for Medical Applications
- Lightweight and Comfortable Wear Design
- Durable Lead Lined Protective Apron
- Adjustable Fit for Easy Usage
- Soft Inner Lining for User Comfort
- Easy to Clean and Maintain Surface
- Provides Front Body Radiation Shielding
- Suitable for X-Ray Rooms and Diagnostic Centers
- Flexible Material for Better Mobility
- Strong Stitching with Long Service Life

Technical Specifications

- Product Type Lead Apron
- Material Lead Rubber / Lead Vinyl Composite
- Outer Material Waterproof Protective Fabric
- Protection Level 0.25 mm Pb / 0.35 mm Pb / 0.50 mm Pb Equivalent
- Color Blue
- Design Sleeveless Front Protection Type
- Closure Type Belt / Strap Closure
- Usage X-Ray, CT Scan, Cath Lab & Radiology Departments
- Radiation Protection Standard Lead Equivalent Shielding
- Wash Care Surface Clean Only

Dimensions (Approx.)

- Available Sizes Small Medium Large XL
- Approximate Length 90 to 110 cm
- Width Approx. 50 to 70 cm
- Thickness Depends on Lead Equivalency

Weight (Approx.)

- Approximate Weight 3 to 7 Kg Depending on Lead Protection Level and Size

Model number
AL-LA

ALIS PRO

DOCTOR LAB COAT

DOCTOR LAB COAT



04

Key Features

- Premium Quality Fabric for Comfortable Daily Wear
- Full Sleeve Professional Lab Coat Design
- Front Button Closure for Secure Fitting
- Multiple Utility Pockets for Storage Convenience
- Breathable and Lightweight Construction
- Wrinkle Resistant and Easy to Maintain
- Suitable for Doctors, Laboratory Staff & Medical Professionals
- Neat Stitching with Professional Finish
- Comfortable Regular Fit Design
- Durable Fabric for Long-Term Usage

Technical Specifications

- Product Type Doctor Lab Coat
- Material Poly Cotton / Cotton Blend Fabric
- Sleeve Type Full Sleeve
- Closure Type Front Button Closure
- Color White
- Collar Type Notch Collar
- Pocket Configuration Chest Pocket and Front Lower Pockets
- Fit Type Regular Fit
- Usage Hospital, Clinic, Laboratory & Medical Institutions
- Wash Care Machine Washable

Dimensions (Approx.)

- Available Sizes Small Medium Large XL XXL
- Approximate Length 32 to 40 Inches Depending on Size
- Chest Size Range 36 to 48 Inches
- Sleeve Length Approx. 22 to 25 Inches

Weight (Approx.)

- Approximate Weight 400 to 700 Grams Depending on Size and Fabric Quality

Model number
AL-DLC

ALIS PRO PATIENT GOWN

PATIENT GOWN



05

Key Features

- Soft and Comfortable Fabric for Patient Convenience
- Easy Wear Open Back Design
- Skin Friendly and Breathable Material
- Lightweight Construction for Comfortable Use
- Tie Closure for Adjustable Fitting
- Suitable for Hospitals, Clinics and Patient Care Units
- Durable Stitching for Long-Term Usage
- Easy to Wash and Quick Dry Material
- Provides Comfort During Medical Examination
- Designed for Hygiene and Patient Mobility

Technical Specifications

- Product Type Patient Gown
- Material Cotton / Poly Cotton Fabric
- Sleeve Type Half Sleeve
- Closure Type Back Tie Closure
- Color Printed Hospital Pattern
- Fit Type Regular Comfortable Fit
- Design Open Back Medical Gown
- Usage Hospitals, Clinics, Nursing Homes & Healthcare Centers
- Wash Care Machine Washable and Reusable

Dimensions (Approx.)

- Available Sizes Small Medium Large XL
- Approximate Length 38 to 48 Inches
- Chest Size Range 36 to 50 Inches
- Sleeve Length Approx. 8 to 12 Inches

Weight (Approx.)

- Approximate Weight 250 to 500 Grams Depending on Size and Fabric Quality

Model number
AL-PG

ALIS PRO DISPOSABLE CAP



DISPOSABLE CAP

06

Key Features

- Lightweight and Breathable Disposable Cap
- Soft Non Woven Fabric for Comfortable Use
- Elastic Edge for Secure and Comfortable Fitting
- Single Use Hygienic Design
- Provides Protection Against Dust and Hair Contamination
- Skin Friendly and Non Irritating Material
- Easy to Wear and Dispose
- Suitable for Medical and Surgical Use
- Compact and Lightweight Construction
- Ideal for Hospitals, Clinics, Labs and Food Industry

Dimensions (Approx.)

- Cap Diameter Approx. 18 to 24 Inches
- Elastic Stretch Universal Size Fit
- Thickness Approx. 10 to 25 GSM

Weight (Approx.)

- Approximate Weight 2 to 5 Grams Per Cap

Technical Specifications

- Product Type Disposable Cap
- Material Non Woven Polypropylene Fabric
- Color Blue
- Design Elastic Bouffant Style
- Usage Single Use
- Size Universal Fit
- Sterility Non Sterile / Sterile Option Available
- Application Hospital, Laboratory, OT, Pharmaceutical & Food Processing Areas
- Disposable Yes

Model number
AL-DC

ALIS PRO FACE MASK



FACE MASK

07

Key Features

- Soft and Breathable Non Woven Fabric
- Lightweight and Comfortable for Long Duration Use
- 3 Layer Protective Design
- Elastic Ear Loops for Secure Fit
- Provides Protection Against Dust and Droplets
- Skin Friendly and Non Irritating Material
- Easy Breathing with Comfortable Fit
- Single Use Hygienic Design
- Suitable for Medical and General Protection Use
- Easy to Wear and Dispose

Dimensions (Approx.)

- Approximate Size 17.5 × 9.5 cm
- Elastic Ear Loop Universal Fit
- Thickness Approx. 20 to 25 GSM Per Layer

Weight (Approx.)

- Approximate Weight 3 to 5 Grams Per Mask

Technical Specifications

- Product Type Disposable Face Mask
- Material Non Woven Polypropylene Fabric
- Layers 3 Ply
- Color Blue
- Design Pleated Ear Loop Type
- Usage Single Use
- Size Universal Fit
- Sterility Non Sterile / Sterile Option Available
- Application Hospital, Clinic, Laboratory, Industrial & General Use
- Disposable Yes

Model number
AL-FM

ALIS PRO DISPOSABLE GLOVES

DISPOSABLE GLOVES



08

Key Features

- Soft and Flexible Disposable Gloves
- Powder Free and Skin Friendly Material
- Provides Excellent Grip and Dexterity
- Comfortable Fit for Long Duration Use
- Tear Resistant and Durable Construction
- Suitable for Medical and Examination Use
- Easy to Wear and Remove
- Provides Protection Against Contamination
- Ambidextrous Design for Convenient Usage
- Single Use Hygienic Product

Technical Specifications

- Product Type Disposable Gloves
- Material Nitrile / Latex / Vinyl
- Color Blue
- Design Ambidextrous
- Surface Textured Fingertips for Better Grip
- Usage Single Use
- Sterility Non Sterile / Sterile Option Available
- Powder Type Powder Free
- Application Hospital, Clinic, Laboratory, Industrial & General Use
- Disposable Yes

Dimensions (Approx.)

- Available Sizes Small Medium Large XL
- Palm Width Approx. 80 to 115 mm
- Glove Length Approx. 230 to 300 mm
- Thickness Approx. 3 to 6 mil

Weight (Approx.)

- Approximate Weight 3 to 8 Grams Per Glove

Model number
AL-DG

ALIS PRO DISPOSABLE SHOE COVER



09

Key Features

- Lightweight and Durable Disposable Shoe Cover
- Made from Soft Non Woven Fabric
- Elastic Opening for Secure Fitting
- Provides Protection Against Dust and Contamination
- Anti Slip Design for Better Safety
- Water Resistant and Breathable Material
- Comfortable for Long Duration Use
- Easy to Wear and Dispose
- Suitable for Medical and Cleanroom Applications
- Single Use Hygienic Product

Technical Specifications

- Product Type Disposable Shoe Cover
- Material Non Woven Polypropylene Fabric
- Color Blue
- Design Elastic Ankle Fit
- Usage Single Use
- Size Universal Fit
- Surface Type Anti Slip / Plain Option Available
- Application Hospital, Laboratory, Cleanroom, Pharmaceutical & Food Industry
- Disposable Yes

Dimensions (Approx.)

- Approximate Length 38 to 42 cm
- Approximate Width 15 to 18 cm
- Elastic Stretch Universal Size Fit
- Thickness Approx. 20 to 40 GSM

Weight (Approx.)

- Approximate Weight 4 to 10 Grams Per Pair

Model number
AL-DSC

ALIS PRO

DISPOSABLE COVER ALL



DISPOSABLE COVER ALL

10

Key Features

- Full Body Protection Disposable Coverall
- Lightweight and Breathable Non Woven Fabric
- Integrated Hood for Enhanced Safety
- Elastic Wrist, Waist and Ankle Fitting
- Provides Protection Against Dust and Contaminants
- Comfortable Design for Extended Wear
- Front Zipper Closure for Easy Wearing
- Fluid Resistant and Durable Construction
- Suitable for Medical, Laboratory and Industrial Use
- Single Use Hygienic Protective Wear

Technical Specifications

- Product Type Disposable Coverall
- Material Non Woven Polypropylene / SMS Fabric
- Color White
- Design Hooded Full Body Suit
- Closure Type Front Zipper Closure
- Usage Single Use
- Size Small Medium Large XL XXL
- Sterility Non Sterile / Sterile Option Available
- Application Hospital, Laboratory, Pharmaceutical, Industrial & Cleanroom Areas
- Disposable Yes

Dimensions (Approx.)

- Approximate Length 150 to 185 cm Depending on Size
- Chest Size Range 36 to 50 Inches
- Sleeve Length Approx. 22 to 26 Inches

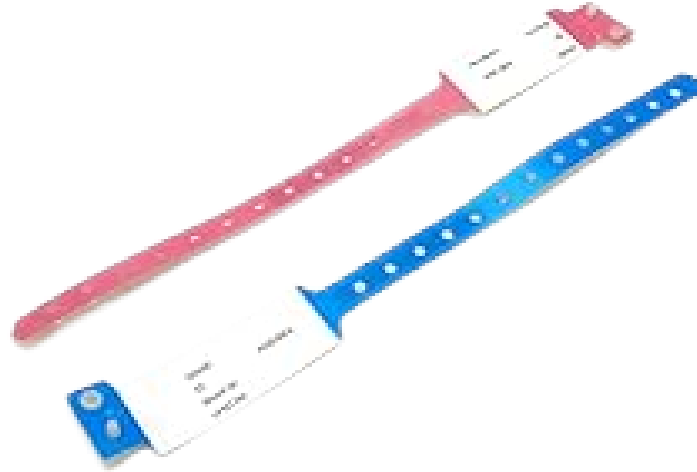
Thickness Approx. 40 to 70 GSM

Weight (Approx.)

- Approximate Weight 120 to 300 Grams Per Piece

Model number
AL-DCA

ALIS PRO PATIENT IDENTIFICATION BAND



Key Features

- Durable and Comfortable Patient Identification Band
- Soft and Skin Friendly Material
- Water Resistant and Tear Resistant Design
- Secure Locking Mechanism for Safety
- Easy to Write Patient Information Area
- Lightweight and Comfortable for Long Wear
- Tamper Evident Closure for Reliable Identification
- Available in Multiple Colors for Easy Categorization
- Suitable for Hospitals and Healthcare Facilities
- Disposable Single Use Hygienic Product

Technical Specifications

- Product Type Patient Identification Band
- Material PVC / Vinyl / Soft Plastic
- Color Blue Pink White and Custom Options
- Design Adjustable Wristband
- Closure Type Snap Lock / Adhesive Closure
- Usage Single Use
- Water Resistance Yes
- Application Hospital, Clinic, Laboratory & Patient Care Areas
- Disposable Yes

Dimensions (Approx.)

- Approximate Length 20 to 30 cm
- Band Width Approx. 1.5 to 2.5 cm
- Adjustable Size Universal Fit

Weight (Approx.)

- Approximate Weight 2 to 5 Grams Per Band

Model number
AL-PIB

ALIS PRO

TIE CLOSURE FULL SLEEVE WITH KNIT CUFFS



12

Key Features

- Full Sleeve Protective Isolation Gown
- Soft and Breathable Non Woven Fabric
- Knitted Cuffs for Secure Wrist Protection
- Tie Closure Design for Adjustable Fitting
- Lightweight and Comfortable for Extended Use
- Fluid Resistant and Protective Construction
- Provides Protection Against Contamination and Splashes
- Easy to Wear and Remove
- Suitable for Medical and Surgical Applications
- Single Use Hygienic Protective Wear

Technical Specifications

- Product Type Isolation Gown
- Material Non Woven Polypropylene / SMS Fabric
- Color Blue
- Sleeve Type Full Sleeve with Knitted Cuffs
- Closure Type Back Tie Closure
- Usage Single Use
- Sterility Non Sterile / Sterile Option Available
- Fluid Resistance Yes
- Application Hospital, Clinic, Laboratory & Surgical Areas
- Disposable Yes

Dimensions (Approx.)

- Available Sizes Small Medium Large XL XXL
- Approximate Length 110 to 130 cm
- Chest Size Range 40 to 55 Inches
- Sleeve Length Approx. 22 to 26 Inches
- Thickness Approx. 35 to 70 GSM

Weight (Approx.)

- Approximate Weight 80 to 180 Grams Per Piece

Model number
AL-TCFSKC

Disclaimer



All product images, designs, specifications, dimensions, weights, and features mentioned in this catalogue are **indicative and approximate**. Actual products may vary due to **continuous product improvement**, technological upgrades, or manufacturing changes without prior notice.

Dimensions and weights are provided in **approximate categories** and may differ slightly depending on configuration, accessories, or customization requirements.

Royal International / ALIS PRO reserves the right to **modify, update, or discontinue any product, design, specification, or feature at any time** in the interest of quality enhancement and innovation.

This catalogue is intended for **general reference only**. For the most accurate, updated, and detailed information, customers are advised to **contact our sales team** before placing an order.

India Sales (Zone-wise)

North Zone

Punjab, Haryana, Himachal Pradesh, Jammu & Kashmir, Delhi, Rajasthan, Uttarakhand, Uttar Pradesh

☎ +91 98788 62255, +91 98211 13255 – North India

South Zone

Tamil Nadu, Karnataka, Kerala, Telangana, Andhra Pradesh

☎ +91 76960 86588, +91 73031 53195 – South India

West Zone

Maharashtra, Gujarat, Goa, Rajasthan (West region)

☎ +91 98788 62728 – West India

East Zone

West Bengal, Odisha, Bihar, Jharkhand, Assam & North-East States

☎ +91 73031 52876 – East India

Export Sales

**International / Export Sales
(All Countries)**

☎ +91 98788 60579

☎ +91 98142 62255

EXPERIENCE CENTER FOR ALL TYPES OF HOSPITAL AND CLINIC SETUPS





ASTHA HOSPITAL



DIYOS
A SURVEILLANCE HOSPITAL

**OUR
HOSPITALS
SETUP**

DIYOS™ HOSPITAL 24x7

A NABH CERTIFIED HOSPITAL

24x7
समस्त सुविधाये

DR. ANNA RAJAI
(M.B.B.S., M.D.)
PEDIATRIAN AND
CHILD SPECIALIST



24x7 RUDRAKSHA MULTISPECIALTY HOSPITAL



SHRI RAM HOSPITAL
A MULTISPECIALITY HOSPITAL
24x7 EMERGENCY



CONNECT WITH US



SHOWROOM

PLOT NO. 2A KH. NO. 28 / 1,
OLD KHAIRA ROAD PREM
NAGAR, NEAR DHASA BUS
STAND METRO STATION,
NAJAFGARH, DELHI, 110043



CORPORATE OFFICE

238, WESTEND MALL,
JANAKPURI WEST, DELHI,
110058



MANUFACTURING UNIT

115 - A WARYANA INDUSTRIAL
COMPLEX, NEAR LEATHER
COMPLEX, JALANDHAR,
PUNJAB, 144021



@alisprofessional



Alis Professional



+91 73031 52840



info@royalinternational.org