



ALIS

PRO

SCIENTIFIC & LABORATORY EQUIPMENTS

CATALOGUE

“ Precision you can trust.
Performance you can rely on. ”



WIDE RANGE



PREMIUM QUALITY



ACCURATE & RELIABLE



TRUSTED SOLUTIONS

About Us



Royal International | Alis Pro

Royal International is a reputed **Manufacturer and Exporter** of premium-quality **Surgical Instruments** and **Complete Hospital Setup Solutions**, based in **Jalandhar, Punjab**, India—one of the world’s recognized hubs for surgical instrument manufacturing.

Under our brand **ALIS PRO**, we design, manufacture, and supply a wide range of reliable, durable, and precision-engineered medical products that meet the evolving needs of the global healthcare industry. Quality, safety, and performance are the core principles that guide everything we do.

In addition to surgical instruments, **Royal International** offers **end-to-end hospital setup solutions under one roof**, including:

- Surgical Instruments
- Hospital Furniture
- ICU & OT Equipment
- Anesthesia and Critical Care Equipment
- Medical Devices and Accessories
- SCIENTIFIC & LABORATORY EQUIPMENTS

Our manufacturing processes follow strict quality control systems and international standards, supported by advanced technology and skilled professionals. Every product is carefully inspected to ensure consistent quality, functionality, and long service life.

We believe in building long-term relationships with our clients by delivering **on-time service, dependable quality, competitive pricing, and responsive customer support**. Whether it is a clinic, nursing home, or a large multi-specialty hospital, we approach every project with the same level of commitment and professionalism.

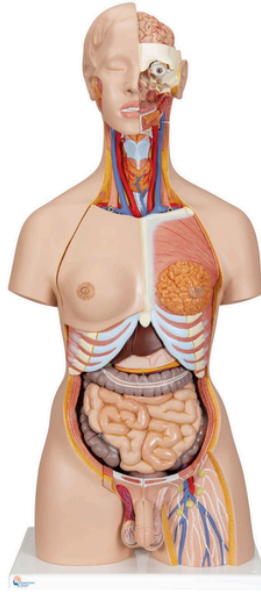
Today, **Royal International** and **ALIS PRO** stand for **trust, innovation, and excellence in healthcare solutions**, serving customers across domestic and international markets. Our mission is to support global healthcare systems with reliable products and to contribute to better patient care worldwide.

S.NO	MODEL	BRAND	ITEM NAME	Page No.
SCIENTIFIC & LABORATORY EQUIPMENTS				
1	AL-HTWH	ALIS PRO	HUMAN TORSO WITH HEAD	5
2	AL-HEP3	ALIS PRO	HUMAN EAR 3 PARTS	6
3	AL-IBW	ALIS PRO	INFUSION / BLOOD WARMER	7
4	AL-HTM	ALIS PRO	HUMAN TOOTH, MOLAR	8
5	AL-HTUTR	ALIS PRO	HUMAN TOOTH UPPER TRIPLE ROOT	9
6	AL-HULJ	ALIS PRO	HUMAN UPPER AND LOWER JAW	10
7	AL-HTT	ALIS PRO	HUMAN TEETH WITH TONGUE	11
8	AL-LARY	ALIS PRO	LARYNX	12
9	AL-HHB	ALIS PRO	HUMAN HEAD WITH BRAIN	13
10	AL-HHN	ALIS PRO	HUMAN HEAD WITH NECK	14
11	AL-HB	ALIS PRO	HUMAN BRAIN	15
12	AL-HN	ALIS PRO	HUMAN NOSE	16
13	AL-HE	ALIS PRO	HUMAN EYE	17
14	AL-HEL	ALIS PRO	HUMAN EYE WITH LID	18
15	AL-HHL	ALIS PRO	HUMAN HEART AND LUNGS	19
16	AL-HH4P	ALIS PRO	HUMAN HEART 4 PARTS	20
17	AL-HS	ALIS PRO	HUMAN STOMACH	21
18	AL-HLGB	ALIS PRO	HUMAN LIVER WITH GALL BLADDER	22
19	AL-HS	ALIS PRO	HUMAN SKIN	23
20	AL-HDS	ALIS PRO	HUMAN DIGESTIVE SYSTEM	24
21	AL-HRS	ALIS PRO	HUMAN RESPIRATORY SYSTEM	25
22	AL-HK	ALIS PRO	HUMAN KIDNEY	26
23	AL-HURO	ALIS PRO	HUMAN URINARY ORGAN	27

S.NO	MODEL	BRAND	ITEM NAME	Page No.
SCIENTIFIC & LABORATORY EQUIPMENTS				
24	AL-MF	ALIS PRO	MUSCLE FIGURE	28
25	AL-HS	ALIS PRO	HUMAN SKELETON	29
26	AL-MOH	ALIS PRO	MODEL OF HYDRA	30
27	AL-AOS	ALIS PRO	ANATOMY OF STARFISH	31
28	AL-FD	ALIS PRO	FROG DISSECTION	32
29	AL-TF	ALIS PRO	TYPICAL FLOWER	33
30	AL-CA	ALIS PRO	CONDENSOR AIRTT	34
31	AL-CG	ALIS PRO	CONDENSOR GRAHM	35
32	AL-CL	ALIS PRO	CONDENSOR LIEBIG	36

ALIS PRO

HUMAN TORSO WITH HEAD



01

Key Features

- Detailed human torso with head model with realistic anatomical structure
- Clearly displays internal organs, muscles, blood vessels, and head anatomy
- Detachable organs for detailed educational demonstration and study
- Hand-painted anatomical detailing for enhanced learning and visualization
- Ideal for medical education, anatomy study, and laboratory training

Technical Specifications

- Material: High-quality PVC / Medical-grade plastic
- Model Type: Human torso with head anatomical model
- Structure: Head, torso, internal organs, vascular system, and muscular anatomy
- Surface Finish: Smooth, durable, and easy to clean
- Mounting: Fixed stand base support
- Usage: Medical colleges, hospitals, laboratories, schools, and clinics

Dimensions (Approx.)

- Model Height: Approx. 60–90 cm
- Base Dimensions: Approx. 30 × 25 cm

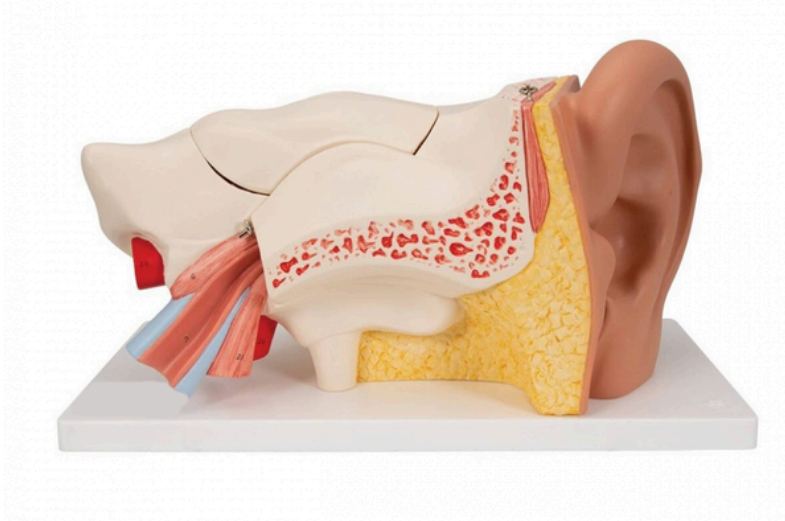
Weight (Approx.)

- Weight: Approx. 4–10 kg

Model number
AL-HTWH

ALIS PRO

HUMAN EAR 3 PARTS



HUMAN EAR 3 PARTS

02

Key Features

- Detailed human ear 3 parts model with realistic anatomical structure
- Clearly displays outer, middle, and inner ear anatomy
- Detachable sections for detailed educational demonstration
- Hand-painted anatomical detailing for enhanced learning and visualization
- Ideal for medical education, ENT study, and laboratory training

Technical Specifications

- Material: High-quality PVC / Medical-grade plastic
- Model Type: Human ear 3 parts anatomical model
- Structure: External ear, middle ear, cochlea, auditory canal, and internal ear anatomy
- Surface Finish: Smooth, durable, and easy to clean
- Mounting: Fixed display base support
- Usage: Medical colleges, hospitals, laboratories, schools, and clinics

Dimensions (Approx.)

- Model Height: Approx. 15–25 cm
- Base Dimensions: Approx. 20 × 15 cm

Weight (Approx.)

- Weight: Approx. 0.5–2 kg

Model number
AL-HEP3

ALIS PRO

INFUSION / BLOOD WARMER



03

Key Features

- Detailed human ear model with realistic anatomical structure
- Clearly displays outer, middle, and inner ear anatomy
- Hand-painted anatomical detailing for enhanced educational demonstration
- Detachable sections for detailed study and learning
- Ideal for medical education, ENT study, and laboratory training

Dimensions (Approx.)

- Model Height: Approx. 15–25 cm
- Base Dimensions: Approx. 20 × 15 cm

Weight (Approx.)

- Weight: Approx. 0.5–2 kg

Technical Specifications

- Material: High-quality PVC / Medical-grade plastic
- Model Type: Human ear anatomical model
- Structure: External ear, auditory canal, eardrum, cochlea, and internal ear anatomy
- Surface Finish: Smooth, durable, and easy to clean
- Mounting: Display base support
- Usage: Medical colleges, hospitals, laboratories, schools, and clinics

Model number
AL-IBW

ALIS PRO

HUMAN TOOTH, MOLAR



04

Key Features

- Detailed human molar tooth model with realistic anatomical structure
- Clearly displays tooth crown, roots, and dental anatomy
- Hand-painted anatomical detailing for enhanced educational demonstration
- Mounted on stable base for secure display and handling
- Ideal for dental education, anatomy study, and laboratory training

Technical Specifications

- Material: High-quality PVC / Medical-grade plastic
- Model Type: Human molar tooth anatomical model
- Structure: Tooth crown, enamel, dentin, pulp cavity, and root anatomy
- Surface Finish: Smooth, durable, and easy to clean
- Mounting: Fixed stand base support
- Usage: Dental colleges, hospitals, laboratories, schools, and clinics

Dimensions (Approx.)

- Model Height: Approx. 10–20 cm
- Base Dimensions: Approx. 10 × 10 cm

Weight (Approx.)

- Weight: Approx. 0.3–1 kg

Model number
AL-HTM

ALIS PRO

HUMAN TOOTH UPPER TRIPLE ROOT



05

Key Features

- Detailed human tooth upper triple root model with realistic anatomical structure
- Clearly displays tooth crown, pulp cavity, roots, and internal dental anatomy
- Hand-painted anatomical detailing for enhanced educational demonstration
- Mounted on stable base for secure display and handling
- Ideal for dental education, anatomy study, and laboratory training

Dimensions (Approx.)

- Model Height: Approx. 10–20 cm
- Base Dimensions: Approx. 10 × 10 cm

Weight (Approx.)

- Weight: Approx. 0.3–1 kg

Technical Specifications

- Material: High-quality PVC / Medical-grade plastic
- Model Type: Human upper triple root tooth anatomical model
- Structure: Tooth crown, enamel, dentin, pulp, and triple root anatomy
- Surface Finish: Smooth, durable, and easy to clean
- Mounting: Fixed stand base support
- Usage: Dental colleges, hospitals, laboratories, schools, and clinics

Model number
AL-HTUTR

ALIS PRO

HUMAN UPPER AND LOWER JAW



06

Key Features

- Detailed human upper and lower jaw model with realistic anatomical structure
- Clearly displays teeth arrangement, jaw structure, gums, and dental anatomy
- Hand-painted anatomical detailing for enhanced educational demonstration
- Mounted on stable base for secure display and handling
- Ideal for dental education, anatomy study, and laboratory training

Dimensions (Approx.)

- Model Height: Approx. 15–25 cm
- Base Dimensions: Approx. 20 × 15 cm

Weight (Approx.)

- Weight: Approx. 0.5–2 kg

Technical Specifications

- Material: High-quality PVC / Medical-grade plastic
- Model Type: Human upper and lower jaw anatomical model
- Structure: Upper jaw, lower jaw, teeth, gums, and dental anatomy
- Surface Finish: Smooth, durable, and easy to clean
- Mounting: Fixed stand base support
- Usage: Dental colleges, hospitals, laboratories, schools, and clinics

Model number
AL-HULJ

ALIS PRO

HUMAN TEETH WITH TONGUE



07

Key Features

- Detailed human teeth with tongue model with realistic anatomical structure
- Clearly displays teeth, tongue, oral cavity, and surrounding anatomy
- Hand-painted anatomical detailing for enhanced educational demonstration
- Mounted on stable base for secure display and handling
- Ideal for dental education, anatomy study, and laboratory training

Dimensions (Approx.)

- Model Height: Approx. 15–25 cm
- Base Dimensions: Approx. 20 × 15 cm

Weight (Approx.)

- Weight: Approx. 0.5–2 kg

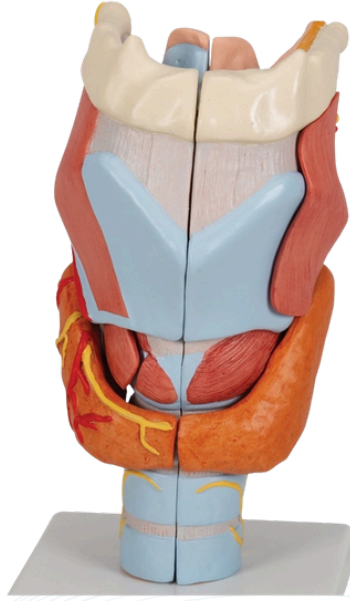
Technical Specifications

- Material: High-quality PVC / Medical-grade plastic
- Model Type: Human teeth with tongue anatomical model
- Structure: Teeth, tongue, oral cavity, and gum anatomy
- Surface Finish: Smooth, durable, and easy to clean
- Mounting: Fixed stand base support
- Usage: Dental colleges, hospitals, laboratories, schools, and clinics

Model number
AL-HTT

ALIS PRO

LARYNX



08

Key Features

- Detailed larynx model with realistic anatomical structure
- Clearly displays thyroid cartilage, vocal cords, trachea, and surrounding anatomy
- Hand-painted anatomical detailing for enhanced educational demonstration
- Mounted on stable base for secure display and handling
- Ideal for medical education, ENT study, and laboratory training

Dimensions (Approx.)

- Model Height: Approx. 20–30 cm
- Base Dimensions: Approx. 15 × 15 cm

Weight (Approx.)

- Weight: Approx. 0.5–2 kg

Technical Specifications

- Material: High-quality PVC / Medical-grade plastic
- Model Type: Larynx anatomical model
- Structure: Larynx, thyroid gland, vocal cords, and tracheal anatomy
- Surface Finish: Smooth, durable, and easy to clean
- Mounting: Fixed stand base support
- Usage: Medical colleges, hospitals, laboratories, schools, and clinics

Model number
AL-LARY

ALIS PRO

HUMAN HEAD WITH BRAIN



09

Key Features

- Detailed human head with brain model with realistic anatomical structure
- Clearly displays brain sections, cranial anatomy, and internal head structure
- Detachable parts for detailed educational demonstration
- Hand-painted anatomical detailing for enhanced learning
- Ideal for medical education, neurology study, and laboratory training

Technical Specifications

- Material: High-quality PVC / Medical-grade plastic
- Model Type: Human head with brain anatomical model
- Structure: Cranial cavity, brain sections, and internal anatomical details
- Surface Finish: Smooth, durable, and easy to clean
- Mounting: Fixed stand base support
- Usage: Medical colleges, hospitals, laboratories, schools, and clinics

Dimensions (Approx.)

- Model Height: Approx. 20–35 cm
- Base Dimensions: Approx. 20 × 15 cm

Weight (Approx.)

- Weight: Approx. 1–3 kg

Model number
AL-HHB

ALIS PRO

HUMAN HEAD WITH NECK



10

Key Features

- Detailed human head with neck model with realistic anatomical structure
- Clearly displays facial muscles, blood vessels, nerves, and neck anatomy
- Hand-painted anatomical detailing for enhanced educational demonstration
- Mounted on stable base for secure display and handling
- Ideal for medical education, anatomy study, and laboratory training

Technical Specifications

- Material: High-quality PVC / Medical-grade plastic
- Model Type: Human head with neck anatomical model
- Structure: Facial muscles, nerves, blood vessels, and neck anatomy
- Surface Finish: Smooth, durable, and easy to clean
- Mounting: Fixed stand base support
- Usage: Medical colleges, hospitals, laboratories, schools, and clinics

Dimensions (Approx.)

- Model Height: Approx. 25–40 cm

Base Dimensions: Approx. 20 × 15 cm

Weight (Approx.)

- Weight: Approx. 1–3 kg

Model number
AL-HHN

ALIS PRO

HUMAN BRAIN



11

Key Features

- Detailed human brain model with realistic anatomical structure
- Clearly displays cerebrum, cerebellum, brain stem, and neural anatomy
- Hand-painted anatomical detailing for enhanced educational demonstration
- Mounted for secure display and easy handling
- Ideal for medical education, neurology study, and laboratory training

Technical Specifications

- Material: High-quality PVC / Medical-grade plastic
- Model Type: Human brain anatomical model
- Structure: Cerebrum, cerebellum, brain stem, and vascular anatomy
- Surface Finish: Smooth, durable, and easy to clean
- Mounting: Display stand support
- Usage: Medical colleges, hospitals, laboratories, schools, and clinics

Dimensions (Approx.)

- Model Height: Approx. 15–25 cm
- Base Dimensions: Approx. 15 × 15 cm

Weight (Approx.)

- Weight: Approx. 0.5–2 kg

Model number
AL-HB

ALIS PRO

HUMAN NOSE

HUMAN NOSE



12

Key Features

- Detailed human nose model with realistic anatomical structure
- Clearly displays nasal cavity, septum, sinus, and internal anatomy
- Hand-painted anatomical detailing for enhanced educational demonstration
- Mounted on stable base for secure display and handling
- Ideal for medical education, ENT study, and laboratory training

Dimensions (Approx.)

- Model Height: Approx. 15–25 cm
- Base Dimensions: Approx. 15 × 15 cm

Weight (Approx.)

- Weight: Approx. 0.5–1.5 kg

Technical Specifications

- Material: High-quality PVC / Medical-grade plastic
- Model Type: Human nose anatomical model
- Structure: Nasal cavity, septum, sinus, and internal nasal anatomy
- Surface Finish: Smooth, durable, and easy to clean
- Mounting: Fixed stand base support
- Usage: Medical colleges, hospitals, laboratories, schools, and clinics

Model number
AL-HN

ALIS PRO

HUMAN EYE



13

Key Features

- Detailed human eye model with realistic anatomical structure
- Clearly displays internal and external eye anatomy
- Hand-painted anatomical detailing for enhanced educational demonstration
- Mounted on stable base for secure display and handling
- Ideal for medical education, ophthalmology study, and laboratory training

Technical Specifications

- Material: High-quality PVC / Medical-grade plastic
- Model Type: Human eye anatomical model
- Structure: Eyeball with optic nerve and muscle anatomy
- Surface Finish: Smooth, durable, and easy to clean
- Mounting: Fixed stand base support
- Usage: Medical colleges, hospitals, laboratories, schools, and clinics

Dimensions (Approx.)

- Model Height: Approx. 15–25 cm
- Base Dimensions: Approx. 15 × 15 cm

Weight (Approx.)

- Weight: Approx. 0.5–1.5 kg

Model number
AL-HE

ALIS PRO

HUMAN EYE WITH LID



14

Key Features

- Detailed human eye with lid model for anatomical study
- Clearly displays eyelid structure, eyeball, muscles, and optic anatomy
- Hand-painted anatomical details for realistic educational demonstration
- Mounted on stable base for secure display and handling
- Ideal for medical education, ophthalmology study, and laboratory training

Technical Specifications

- Material: High-quality PVC / Medical-grade plastic
- Model Type: Human eye with lid anatomical model
- Structure: Eyeball, eyelid, optic nerve, and eye muscle anatomy
- Surface Finish: Smooth, durable, and easy to clean
- Mounting: Fixed stand base support
- Usage: Medical colleges, hospitals, laboratories, schools, and clinics

Dimensions (Approx.)

- Model Height: Approx. 15–25 cm
- Base Dimensions: Approx. 15 × 15 cm

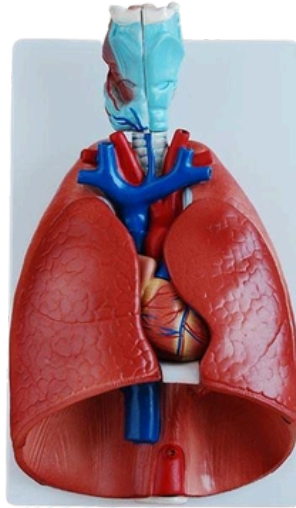
Weight (Approx.)

- Weight: Approx. 0.5–1.5 kg

Model number
AL-HEL

ALIS PRO

HUMAN HEART AND LUNGS



15

Key Features

- Detailed human heart and lungs model with realistic anatomical structure
- Clearly displays lungs, heart, trachea, and vascular anatomy
- Hand-painted anatomical detailing for enhanced educational demonstration
- Mounted on stable display board for easy handling and study
- Ideal for medical education, anatomy learning, and laboratory training

Technical Specifications

- Material: High-quality PVC / Medical-grade plastic
- Model Type: Human heart and lungs anatomical model
- Structure: Heart, lungs, trachea, and major blood vessels
- Surface Finish: Smooth, durable, and easy to clean
- Mounting: Fixed board-mounted support
- Usage: Medical colleges, hospitals, laboratories, schools, and clinics

Dimensions (Approx.)

- Model Height: Approx. 30–45 cm
- Base Dimensions: Approx. 20 × 15 cm

Weight (Approx.)

- Weight: Approx. 1–3 kg

Model number
AL-HHL

ALIS PRO

HUMAN HEART 4 PARTS

HUMAN HEART 4 PARTS



16

Key Features

- Detailed human heart model with 4 detachable parts
- Clearly displays internal and external cardiac anatomy
- Hand-painted anatomical details for realistic educational demonstration
- Mounted on stable base for secure display and handling
- Ideal for medical education, anatomy study, and laboratory training

Technical Specifications

- Material: High-quality PVC / Medical-grade plastic
- Model Type: Human heart anatomical model
- Structure: 4-part detachable heart model with detailed chambers and vessels
- Surface Finish: Smooth, durable, and easy to clean
- Mounting: Fixed stand base support
- Usage: Medical colleges, hospitals, laboratories, schools, and clinics

Dimensions (Approx.)

- Model Height: Approx. 20–30 cm

Base Dimensions: Approx. 15 × 15 cm

Weight (Approx.)

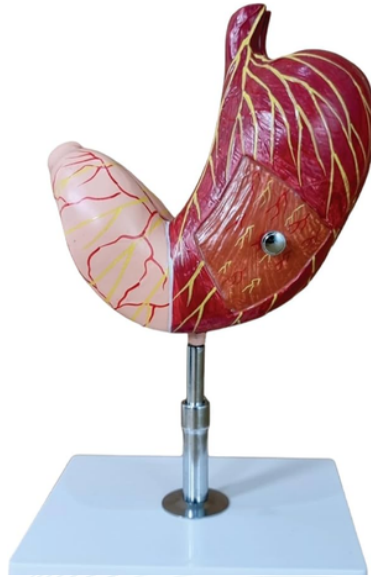
- Weight: Approx. 0.5–2 kg

Model number
AL-HH4P

ALIS PRO

HUMAN STOMACH

HUMAN STOMACH



17

Key Features

- Detailed human stomach model with realistic anatomical structure
- Clearly displays internal and external stomach anatomy
- Hand-painted anatomical detailing for effective educational demonstration
- Mounted on stable base for secure display and study
- Ideal for medical education, anatomy learning, and laboratory training

Technical Specifications

- Material: High-quality PVC / Medical-grade plastic
- Model Type: Human stomach anatomical model
- Structure: Detailed stomach anatomy with internal features
- Surface Finish: Smooth, durable, and easy to clean
- Mounting: Fixed stand base support
- Usage: Medical colleges, hospitals, laboratories, schools, and clinics

Dimensions (Approx.)

- Model Height: Approx. 20–35 cm
- Base Dimensions: Approx. 15 × 15 cm

Weight (Approx.)

- Weight: Approx. 0.5–2 kg

Model number
AL-HS

ALIS PRO

HUMAN LIVER WITH GALL BLADDER

LIVER WITH GALL BLADDER



18

Key Features

- Detailed human liver with gall bladder model for anatomical study
- Clearly displays liver structure and gall bladder positioning
- Realistic hand-painted anatomical detailing for educational demonstration
- Mounted on stable base for secure display and handling
- Ideal for medical education, anatomy study, and laboratory training

Technical Specifications

- Material: High-quality PVC / Medical-grade plastic
- Model Type: Human liver with gall bladder anatomical model
- Structure: Liver lobes with attached gall bladder anatomy
- Surface Finish: Smooth, durable, and easy to clean
- Mounting: Fixed stand base support
- Usage: Medical colleges, hospitals, laboratories, schools, and clinics

Dimensions (Approx.)

- Model Height: Approx. 20–30 cm
- Base Dimensions: Approx. 15 × 15 cm

Weight (Approx.)

- Weight: Approx. 0.5–2 kg

Model number
AL-HLGB

ALIS PRO HUMAN SKIN



19

Key Features

- Detailed human skin model with enlarged anatomical structure
- Clearly displays skin layers, hair follicles, glands, and nerve endings
- Hand-painted anatomical details for enhanced visualization
- Mounted on stable base for easy display and demonstration
- Ideal for medical education, dermatology study, and laboratory use

Technical Specifications

- Material: High-quality PVC / Medical-grade plastic
- Model Type: Human skin anatomical model
- Structure: Epidermis, dermis, subcutaneous tissue, hair follicles, sweat and sebaceous glands
- Surface Finish: Smooth, durable, and easy to clean
- Mounting: Fixed base support
- Usage: Medical colleges, laboratories, hospitals, schools, and clinics

Dimensions (Approx.)

- Model Height: Approx. 20–30 cm

Base Dimensions: Approx. 15 × 15 cm

Weight (Approx.)

- Weight: Approx. 0.5–2 kg

Model number
AL-HS

ALIS PRO

HUMAN DIGESTIVE SYSTEM



20

Key Features

- Detailed human digestive system model with realistic anatomical structure
- Clearly displays esophagus, stomach, liver, intestines, and digestive organs
- Hand-painted anatomical details for enhanced educational demonstration
- Mounted on stable base for secure display and learning
- Ideal for medical education, anatomy study, and laboratory training

Technical Specifications

- Material: High-quality PVC / Medical-grade plastic
- Model Type: Human digestive system anatomical model
- Structure: Esophagus, stomach, liver, pancreas, small and large intestines
- Surface Finish: Smooth, durable, and easy to clean
- Mounting: Fixed stand base support
- Usage: Medical colleges, laboratories, hospitals, schools, and clinics

Dimensions (Approx.)

- Model Height: Approx. 40–60 cm
- Base Dimensions: Approx. 20 × 15 cm

Weight (Approx.)

- Weight: Approx. 1–3 kg

Model number
AL-HDS

ALIS PRO

HUMAN RESPIRATORY SYSTEM



21

Key Features

- Detailed human respiratory system model with accurate anatomical structure
- Clearly displays lungs, trachea, bronchi, nasal cavity, and diaphragm area
- Hand-painted anatomical details for effective learning
- Mounted on stable base for easy demonstration and display
- Ideal for medical education, anatomy study, and laboratory training

Technical Specifications

- Material: High-quality PVC / Medical-grade plastic
- Model Type: Human respiratory system anatomical model
- Structure: Lungs, trachea, bronchi, and upper respiratory anatomy
- Surface Finish: Smooth, durable, and easy to clean
- Mounting: Fixed stand base support
- Usage: Medical colleges, hospitals, laboratories, schools, and clinics

Dimensions (Approx.)

- Model Height: Approx. 35–50 cm
- Base Dimensions: Approx. 20 × 15 cm

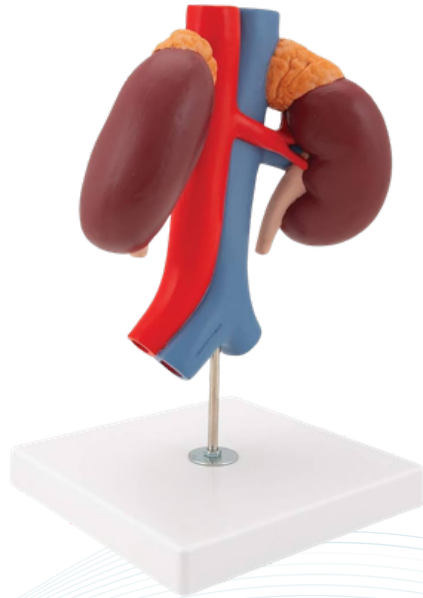
Weight (Approx.)

- Weight: Approx. 1–3 kg

Model number
AL-HRS

ALIS PRO

HUMAN KIDNEY



22

Key Features

- Detailed human kidney model with realistic anatomical representation
- Clearly displays kidneys, adrenal glands, arteries, and veins
- Educational design for anatomy learning and demonstration
- Mounted on stable base for secure display
- Ideal for medical colleges, laboratories, clinics, and schools

Dimensions (Approx.)

- Model Height: Approx. 25–35 cm
- Base Dimensions: Approx. 15 × 15 cm

Weight (Approx.)

- Weight: Approx. 0.5–2 kg

Technical Specifications

- Material: High-quality PVC / Medical-grade plastic
- Model Type: Human kidney anatomical model
- Structure: Kidneys with vascular and glandular anatomy
- Surface Finish: Smooth, durable, and easy to clean
- Mounting: Fixed stand base support
- Usage: Medical education, laboratory training, and anatomy study

Model number
AL-HK

ALIS PRO

HUMAN URINARY ORGAN



23

Key Features

- Detailed human urinary organ model with accurate anatomical structure
- Clearly displays kidneys, ureters, bladder, and blood vessels
- Hand-painted anatomical details for enhanced visualization
- Mounted on stable base for easy display and demonstration
- Ideal for medical education, anatomy study, and laboratory use

Dimensions (Approx.)

- Model Height: Approx. 35–50 cm
- Base Dimensions: Approx. 20 × 15 cm

Weight (Approx.)

- Weight: Approx. 1–3 kg

Technical Specifications

- Material: High-quality PVC / Medical-grade plastic
- Model Type: Human urinary system anatomical model
- Structure: Kidneys, ureters, urinary bladder, and vascular system
- Design: Educational anatomical demonstration model
- Surface Finish: Durable, smooth, and easy to clean
- Mounting: Fixed base stand support
- Usage: Hospitals, medical colleges, laboratories, schools, and clinics

Model number
AL-HURO

ALIS PRO MUSCLE FIGURE

MUSCLE FIGURE



24

Key Features

- Detailed human muscle figure with realistic anatomical structure
- Clearly visible muscular system for educational demonstration
- Hand-painted body details for enhanced learning
- Mounted on stable base for secure display
- Ideal for anatomy study, medical training, and laboratory use

Technical Specifications

- Material: High-quality PVC / Medical-grade plastic
- Model Type: Human muscular anatomical model
- Design: Life-size / semi life-size anatomical structure
- Parts: Detachable body sections for internal study
- Surface Finish: Smooth, durable, and easy to clean
- Mounting: Fixed base support stand
- Usage: Medical colleges, schools, hospitals, laboratories, and clinics

Dimensions (Approx.)

- Model Height: Approx. 80–170 cm
- Base Dimensions: Approx. 30 × 30 cm

Weight (Approx.)

- Weight: Approx. 4–10 kg depending on model size

Model number
AL-MF

ALIS PRO

HUMAN SKELETON



25

Key Features

- Life-size human skeleton model with anatomical accuracy
- Flexible joints for realistic movement demonstration
- Mounted on stable wheeled stand for easy mobility
- Detachable limbs and skull for detailed study
- Ideal for medical, laboratory, and educational use

Technical Specifications

- Material: High-quality PVC / Medical-grade plastic
- Structure: Full articulated adult human skeleton
- Skull: Removable calvarium with movable jaw
- Spine: Flexible vertebral column with nerve branches
- Joints: Natural movement at shoulders, elbows, knees, and hips
- Mounting: Metallic stand with caster wheels
- Usage: Anatomy labs, schools, hospitals, clinics, and training centers

Dimensions (Approx.)

- Skeleton Height: Approx. 170–180 cm
- Overall Height with Stand: Approx. 190 cm
- Base Dimensions: Approx. 50 × 50 cm

Weight (Approx.)

- Weight: Approx. 8–12 kg

Model number
AL-HS

ALIS PRO

MODEL OF HYDRA

MODEL OF HYDRA



26

Key Features

- Highly detailed hydra anatomical teaching model
- Clearly displays internal and external body structures
- Realistic hand-painted educational finish
- Mounted on stable base for classroom demonstrations
- Ideal for zoology and biological studies
- Durable and lightweight construction
- Easy identification of anatomical parts
- Reusable laboratory teaching model
- Suitable for schools, colleges, and laboratories
- Easy to clean and maintain

Technical Specifications

- Product Type : Hydra Educational Model
 - Material : PVC / Fiber / High-quality Plastic
 - Model Type : Zoological anatomy model
 - Finish : Hand-painted anatomical detailing
 - Mounting Type : Base mounted
 - Display Structure : Tentacles, body cavity, mouth, budding region, and internal anatomy
 - Usage : Biology and zoology educational demonstrations
 - Application : Educational institutions and laboratories
 - Cleaning : Smooth wipe-clean surface
- Durability : Long-lasting educational model

Dimensions (Approx.)

- Model Height : Approx. 20–35 cm
- Base Size : Approx. 10 × 15 cm
- Model Width : Approx. 8–15 cm
- Display Thickness : Approx. 3–8 cm

Weight (Approx.)

- Approximate Weight : 300 g – 1 kg depending on size and material

Model number
AL-MOH

ALIS PRO

ANATOMY OF STARFISH



Key Features

- Highly detailed anatomical starfish model
- Displays internal and external structures clearly
- Realistic hand-painted educational finish
- Mounted on stable base for classroom demonstrations
- Ideal for zoology and marine biology studies
- Durable and lightweight construction
- Easy identification of anatomical parts
- Reusable laboratory teaching model
- Suitable for schools, colleges, and laboratories
- Easy to clean and maintain

Technical Specifications

- Product Type : Starfish Anatomy Educational Model
- Material : PVC / Fiber / High-quality Plastic
- Model Type : Marine animal anatomical model
- Finish : Hand-painted anatomical detailing
- Mounting Type : Base mounted
- Display Structure : Internal organs and external body features
- Usage : Zoology and marine biology educational demonstrations
- Application : Educational institutions and laboratories
- Cleaning : Smooth wipe-clean surface
- Durability : Long-lasting educational model

Dimensions (Approx.)

- Model Height : Approx. 20–35 cm
- Base Size : Approx. 15 × 20 cm
- Model Width : Approx. 20–30 cm
- Display Thickness : Approx. 5–10 cm

Weight (Approx.)

- Approximate Weight : 500 g – 1.5 kg depending on size and material

Model number
AL-AOS

ALIS PRO

FROG DISSECTION

FROG DISSECTION



28

Key Features

- Highly detailed anatomical frog model
- Displays internal organs and body structure clearly
- Bright and realistic hand-painted finish
- Mounted on stable base for demonstration purposes
- Educational model for biology and zoology studies
- Durable and lightweight construction
- Easy identification of internal anatomy parts
- Reusable laboratory teaching model
- Suitable for schools, colleges, and laboratories
- Easy to clean and maintain

Technical Specifications

- Product Type : Frog Dissection Anatomical Model
- Material : PVC / Fiber / High-quality Plastic
- Model Type : Internal anatomy educational model
- Finish : Hand-painted anatomical detailing
- Mounting Type : Base mounted with support stand
- Display Structure : Digestive, respiratory, circulatory, and reproductive organs
- Usage : Biology and zoology educational demonstrations
- Application : Educational institutions and laboratories
- Cleaning : Wipe-clean smooth surface
- Durability : Long-lasting educational model

Dimensions (Approx.)

- Model Height : Approx. 25–40 cm
- Base Size : Approx. 20 × 20 cm
- Model Width : Approx. 15–25 cm
- Stand Height : Approx. 10–20 cm

Weight (Approx.)

- Approximate Weight : 800 g – 2 kg depending on size and material

Model number
AL-FD

ALIS PRO TYPICAL FLOWER

TYPICAL FLOWER



29

Key Features

- Highly detailed botanical teaching model
- Accurate representation of flower anatomy
- Bright and attractive color finish for easy identification
- Shows internal and external floral structures clearly
- Mounted on stable base for classroom display
- Durable and lightweight construction
- Ideal for biology and botany education
- Reusable educational demonstration model
- Easy to handle and transport
- Suitable for schools, colleges, and laboratories

Technical Specifications

- Product Type : Botanical Flower Model
- Material : PVC / Fiber / High-quality Plastic
- Model Type : Typical Flower Anatomy Model
- Finish : Hand-painted educational detailing
- Mounting Type : Base mounted
- Usage : Biology and botany teaching demonstrations
- Structure Display : Petals, sepals, stamens, pistil, ovary, stigma, style
- Application : Educational institutions and laboratories
- Cleaning : Easy wipe-clean surface
- Durability : Long-lasting educational model

Dimensions (Approx.)

- Model Height : Approx. 25–40 cm
- Base Size : Approx. 15 × 15 cm
- Flower Diameter : Approx. 18–25 cm
- Weight Capacity of Base : Stable classroom support

Weight (Approx.)

- Approximate Weight : 500 g – 1.5 kg depending on size and material

Model number
AL-TF

ALIS PRO

CONDENSOR AIRTT

CONDENSOR AIRTT



30

Features

- High-quality Borosilicate 3.3 glass construction
- Simple air-cooled condenser design
- No water circulation required
- Excellent thermal shock resistance
- High chemical resistance against acids and solvents
- Transparent body for easy observation during experiments
- Lightweight and compact laboratory glassware
- Suitable for small-scale distillation and reflux setups
- Reusable and durable construction
- Easy to clean and maintain

Technical Specifications

- Product Type : Air Condenser
- Material : Borosilicate Glass 3.3
- Design : Straight air-cooled condenser tube
- Cooling Method : Natural air cooling
- Temperature Resistance : Up to approx. 250°C
- Chemical Resistance : High resistance to laboratory chemicals
- Application : Distillation, reflux, evaporation, organic chemistry experiments
- Joint Type : Ground glass joint / plain end
- Glass Type : Heavy-duty laboratory grade glass
- Autoclavable : Yes, in many laboratory models

Dimensions (Approx.)

- Available Lengths : 150 mm, 200 mm, 300 mm, 400 mm
- Outer Diameter : Approx. 20–30 mm
- Inner Tube Diameter : Approx. 10–18 mm
- Total Length (300 mm model) : Approx. 18 inches
- Wall Thickness : Approx. 1.5–2.5 mm

Weight (Approx.)

- 150 mm Model : Approx. 150–250 g
- 200 mm Model : Approx. 250–350 g
- 300 mm Model : Approx. 400–550 g
- 400 mm Model : Approx. 600–800 g depending on design

Model number
AL-CA

ALIS PRO

CONDENSOR GRAHM

CONDENSOR GRAHM



Features

- High-quality Borosilicate 3.3 glass construction
- Spiral inner coil design for maximum cooling efficiency
- Excellent thermal shock resistance
- Efficient vapor condensation with continuous water circulation
- High chemical resistance against acids and solvents
- Transparent body for easy process monitoring
- Leak-proof side hose connectors
- Suitable for distillation and reflux applications
- Reusable and durable laboratory glassware
- Compatible with standard laboratory setups

Technical Specifications

- Product Type : Graham Condenser
- Material : Borosilicate Glass 3.3
- Design : Spiral coil water-cooled condenser
- Cooling Method : Continuous water circulation
- Temperature Resistance : Up to approx. 250°C
- Chemical Resistance : High resistance to laboratory chemicals
- Application : Distillation, reflux, solvent recovery, organic chemistry experiments
- Joint Type : Ground glass joint / plain end
- Glass Type : Heavy-duty laboratory grade glass
- Autoclavable : Yes, in many laboratory models

Weight (Approx.)

- 200 mm Model : Approx. 300–450 g
- 300 mm Model : Approx. 500–700 g
- 400 mm Model : Approx. 0.9 kg
- 500 mm Model : Approx. 1–1.3 kg depending on design

Dimensions (Approx.)

- Available Lengths : 200 mm, 300 mm, 400 mm, 500 mm
- Outer Diameter : Approx. 30–35 mm
- Inner Coil Diameter : Approx. 10–15 mm
- Water Nozzle Diameter : Approx. 6–8 mm
- Coil Length : Approx. 200–500 mm
- Total Length (400 mm model) : Approx. 24 inches

31

Model number
AL-CG

ALIS PRO

CONDENSOR LIEBIG

CONDENSOR LIEBIG



32

Features

- High-quality Borosilicate 3.3 glass construction
- Excellent thermal shock resistance
- Straight inner tube design for efficient condensation
- Double-wall water jacket cooling system
- High chemical resistance against acids and solvents
- Transparent body for easy observation during experiments
- Leak-proof side hose connectors for coolant circulation
- Suitable for distillation, reflux, and extraction setups
- Durable and reusable laboratory glassware
- Available with standard ground glass joints

Technical Specifications

- Product Type : Liebig Condenser
- Material : Borosilicate Glass 3.3
- Design : Straight tube water-cooled condenser
- Cooling Method : Continuous water circulation
- Temperature Resistance : Up to approx. 250°C
- Chemical Resistance : High resistance to laboratory chemicals
- Application : Distillation, reflux, solvent recovery, chemical experiments
- Joint Type : Ground glass joint / plain end
- Glass Type : Heavy-duty laboratory grade glass
- Autoclavable : Yes, up to 121°C in many models

Weight (Approx.)

- 200 mm Model : Approx. 250–350 g
- 300 mm Model : Approx. 400–600 g
- 400 mm Model : Approx. 0.8 kg
- 500 mm Model : Approx. 0.9–1.2 kg depending on design

Dimensions (Approx.)

- Available Lengths : 200 mm, 300 mm, 400 mm, 500 mm
- Outer Diameter : Approx. 28–32 mm
- Inner Tube Diameter : Approx. 20 mm
- Water Nozzle Diameter : Approx. 6–8 mm
- Jacket Length : Approx. 200–500 mm
- Total Length (400 mm model) : Approx. 23.25 inches

Model number
AL-CL

Disclaimer



All product images, designs, specifications, dimensions, weights, and features mentioned in this catalogue are **indicative and approximate**. Actual products may vary due to **continuous product improvement**, technological upgrades, or manufacturing changes without prior notice.

Dimensions and weights are provided in **approximate categories** and may differ slightly depending on configuration, accessories, or customization requirements.

Royal International / ALIS PRO reserves the right to **modify, update, or discontinue any product, design, specification, or feature at any time** in the interest of quality enhancement and innovation.

This catalogue is intended for **general reference only**. For the most accurate, updated, and detailed information, customers are advised to **contact our sales team** before placing an order.

India Sales (Zone-wise)

North Zone

Punjab, Haryana, Himachal Pradesh, Jammu & Kashmir, Delhi, Rajasthan, Uttarakhand, Uttar Pradesh

☎ +91 98788 62255, +91 98211 13255 – North India

South Zone

Tamil Nadu, Karnataka, Kerala, Telangana, Andhra Pradesh

☎ +91 76960 86588, +91 73031 53195 – South India

West Zone

Maharashtra, Gujarat, Goa, Rajasthan (West region)

☎ +91 98788 62728 – West India

East Zone

West Bengal, Odisha, Bihar, Jharkhand, Assam & North-East States

☎ +91 73031 52876 – East India

Export Sales

**International / Export Sales
(All Countries)**

☎ +91 98788 60579

☎ +91 98142 62255

EXPERIENCE CENTER FOR ALL TYPES OF HOSPITAL AND CLINIC SETUPS





ASTHA HOSPITAL



DIYOS
A SURVEILLANCE HOSPITAL

**OUR
HOSPITALS
SETUP**

DIYOS™ HOSPITAL 24x7

A NABH CERTIFIED HOSPITAL

24x7
समस्त सुविधाये

DR. ANNA RAJAI
[M.B.B.S., M.D.]
PEDIATRIC AND
CHILD SPECIALIST



24x7 RUDRAKSHA MULTISPECIALTY HOSPITAL



SHRI RAM HOSPITAL
A MULTISPECIALITY HOSPITAL
24x7 EMERGENCY



I.C.U.
MODERN
PHARMA
DIGITAL X
PATHO
DENTAL

CONNECT WITH US



SHOWROOM

PLOT NO. 2A KH. NO. 28 / 1,
OLD KHAIRA ROAD PREM
NAGAR, NEAR DHASA BUS
STAND METRO STATION,
NAJAFGARH, DELHI, 110043



CORPORATE OFFICE

238, WESTEND MALL,
JANAKPURI WEST, DELHI,
110058



MANUFACTURING UNIT

115 - A WARYANA INDUSTRIAL
COMPLEX, NEAR LEATHER
COMPLEX, JALANDHAR,
PUNJAB, 144021



@alisprofessional



Alis Professional



+91 73031 52840



info@royalinternational.org